

Using Brainbook

Instructions for school admins: Logging In and Access website/course

Athletic Directors Access:

- * Log-in using your email address and then enter the generic password below.
- * Password: your temporary password will be **P@ssw0rd** (You'll be prompted to change it after this one-time use).

(If you are **unable to log-in** - league director will need to add access, Please Contact us by email to request Admin Access)

NOTE: This will allow you to monitor all student athletes from your school and run reports. See below.

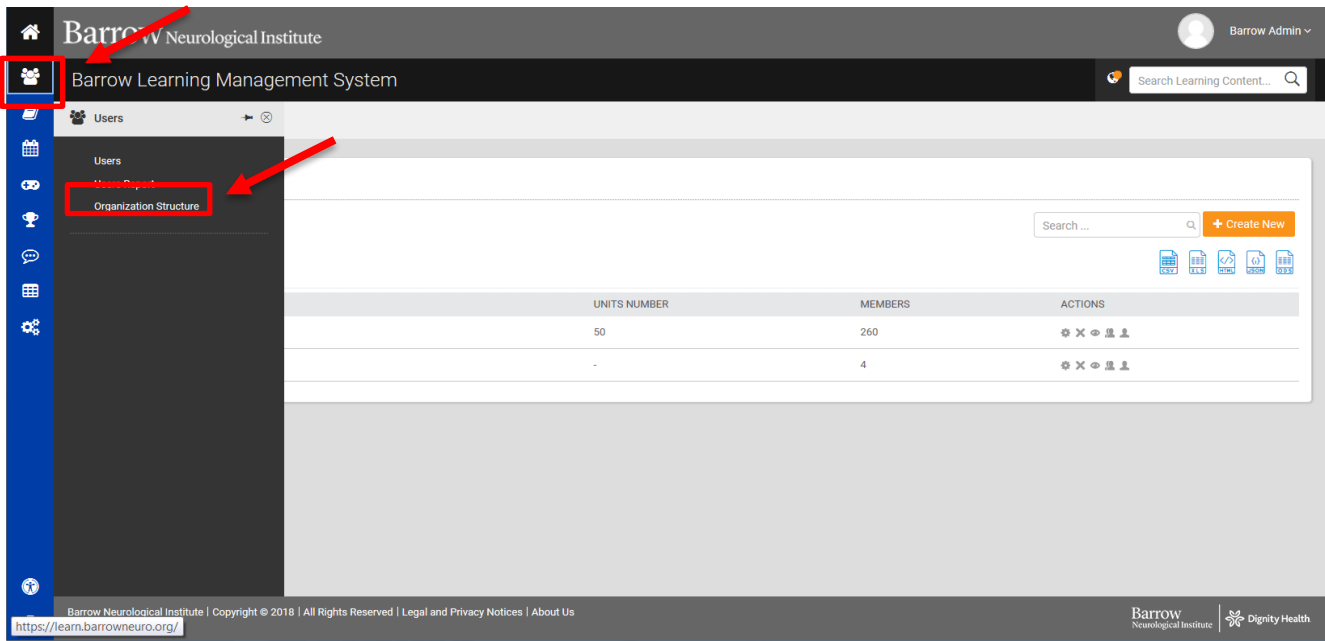
Using Brainbook

Instructions for school admins: Tracking and reporting your athletes

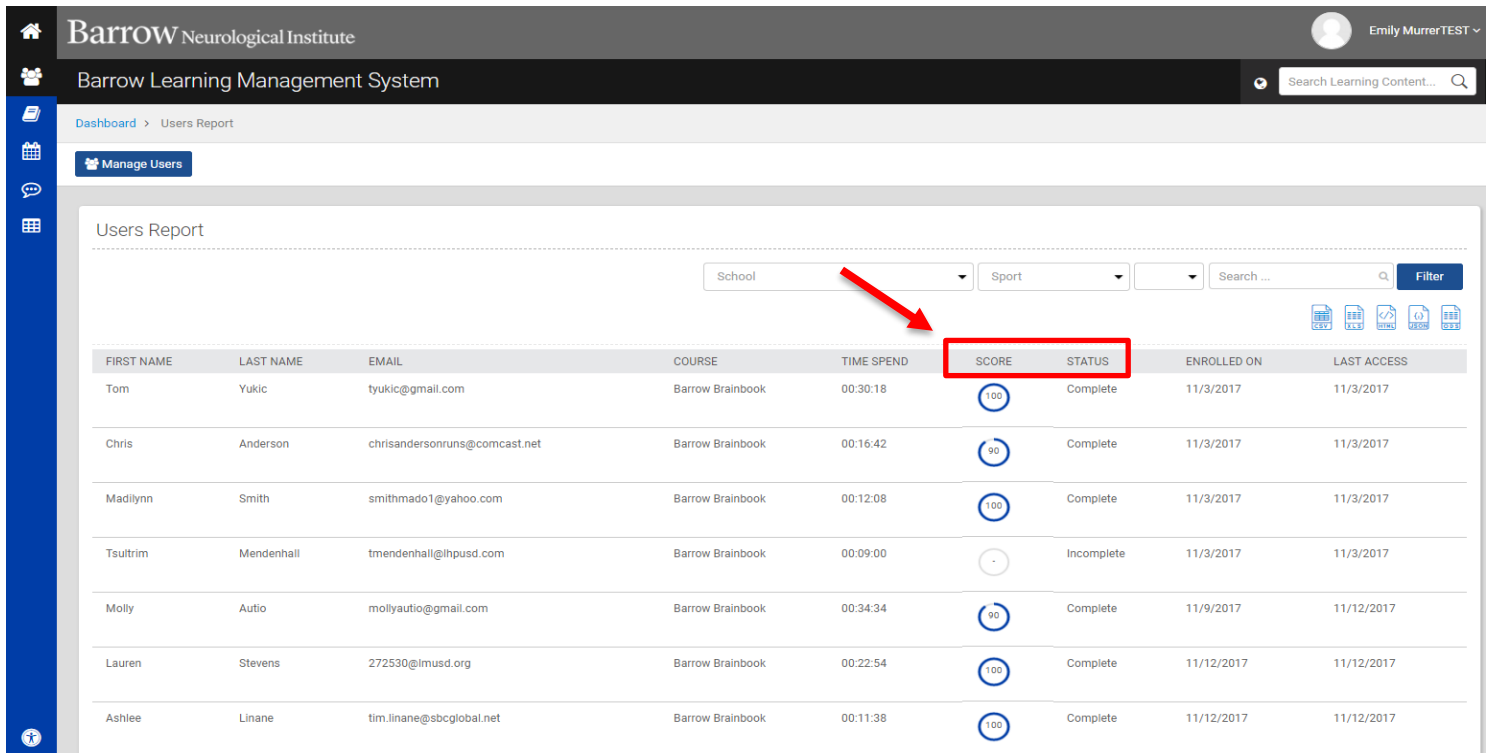
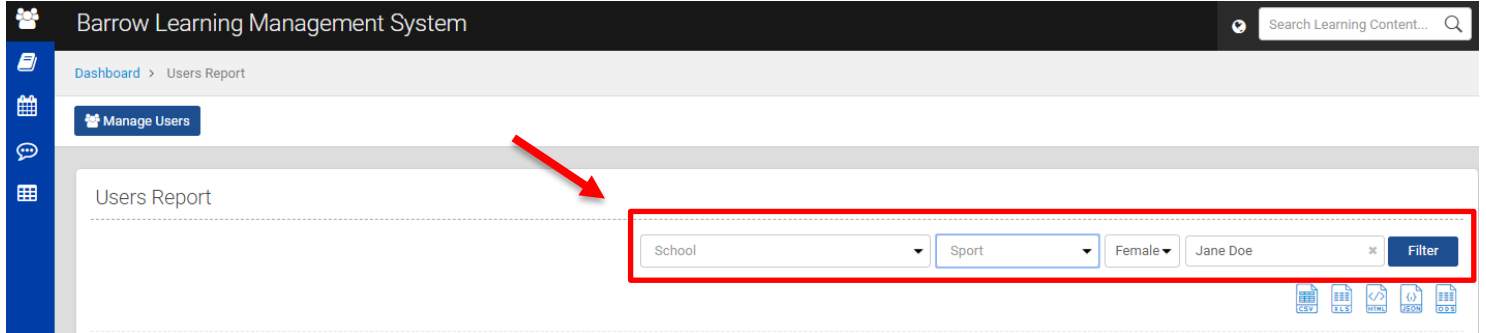
Admins: Log-in to <https://learn.barrowneuro.org>, with your username and password.

Tracking your student athletes:

1. From the menu on the left, if you select the second tab from the top, you'll be able to track your athletes completing Barrow Brainbook under **"Users Report"**.



2. **Please see images below** -To quickly sort through your student athletes to view their Barrow Brainbook status, use the tabs at the top to search by school, sport, gender, or filter if needing to specify your search. Each student’s name will display the score and the status of where they are in the process of starting, taking, and completing Brainbook.



Using Brainbook

Student Eligibility/Clearance

Students must complete this course with an 80% or better to be eligible/”cleared to play”.

1. Student will bring you a certificate upon completion which we like to call **"Ticket to Play"**.
2. You must have a copy of this in the files.
3. Your school may be audited by the league.

QUESTIONS/ISSUES ---- For trouble shooting any technical issues, please email concussiondiscussion@barrowneuro.org